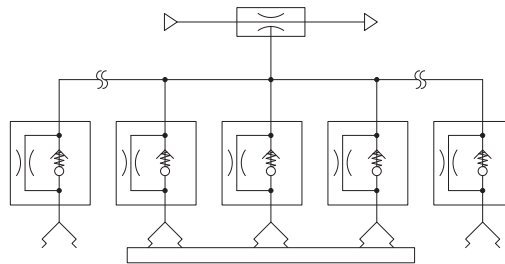
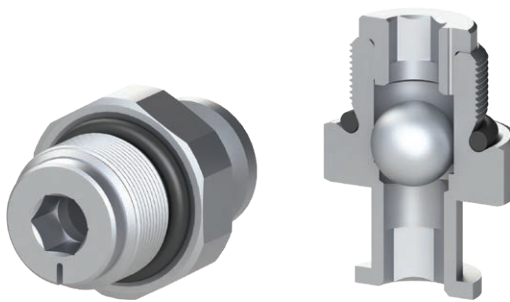


Fittings with self-closing valve and calibrated hole

- Ideal for applications that involve the handling of surfaces of different shapes and sizes
- Suitable for centralised applications, they allow the size of the pump and therefore also consumption to be reduced, although several suction cups may not be gripping
- Suitable for both sealed and porous applications
- The integrated internal self-closing valve and calibrated hole can also be used for applications that involve handling at 180°
- Available with male threads in G1/8" - G1/4" and G3/8" versions
- Can be adapted to different types of Gimatic suction cups while maintaining the same dimensions as standard traditional fittings without increasing the overall size

NEW



Technical features

Pressure range	-1 ÷ 8 bar
Weight	4 ÷ 16 g
Material	SS, Al, Nitrile (NBR)
Temperature range	-70 ÷ 200 °C
Maximum pressure drop for each suction cup not gripped with EJ-MEDIUM-HF	2 Kpa
Maximum pressure drop for each suction cup not gripped with EJ-LARGE-HF	1 Kpa

Compatible suction cups

Fitting	1600020	1600021	1600022	1600023	1600024	1600025	1600026
Suction cups	VG.U22 VG.U33 VG.U42 VG.U53 VG.B33 VG.B42 VG.B53 VG.LB33 VG.LB42 VG.LB53 VG.B33.SFO VG.B42.SFO VG.B53.SFO VG.LB33.SFO VG.LB42.SFO VG.LB53.SFO VG.MF45P		VG.IS35P VG.IS45P VG.CF42 VG.FP30 VG.FP40 VG.BP35 VG.GX35P	VG.IS55P VG.CF53 VG.BP52 VG.GX52P	VG.CF77 VG.CF112 VG.CF152	VG.MB32 VG.MB42	VG.MB52 VG.MB83 VG.MB103 VG.MF60P VG.MF80P VG.MF100P VG.MF120P

Identification codes			
Drawing	Alphanumeric code	Fittings	Order code
A	FT.G18M.S55.E16	Fitting G1/8" Male with check valve and calibrated hole diameter, hexagon 16 mm	1600020
B	FT.G14M.S75.E17	Fitting G1/4" Male with check valve and calibrated hole diameter, hexagon 17 mm	1600021
C	FT.G14M.S75.E19	Fitting G1/4" Male with check valve and calibrated hole diameter, hexagon 19 mm	1600022
D	FT.G38M.S75.E24	Fitting G3/8" Male with check valve and calibrated hole diameter, hexagon 24 mm	1600023
E	FT.G38M.S10.199	Fitting G3/8" Male with check valve and calibrated hole diameter	1600024
F	FT.G14M.G14M.S55	Fitting G1/4" Male - G1/4" Male with check valve and calibrated hole diameter, hexagon 18 mm	1600025
G	FT.G38M.G38M.S75	Fitting G3/8" Male - G3/8" Male with check valve and calibrated hole diameter, hexagon 24 mm	1600026

