

## MOTORS WITH POWER UP TO 850 W

LFB SERIES - Reversible

WATT: 160 / Consumption: 400 NI/1'

Data measured at pressure of 6 bar - Minimum supply hose diameter: 6 mm.

## DATA SHEET LFBHR



1. Cylindrical keyed shaft
2. Grip zone
3. Air inlets
4. Air exhaust

### Technical sheet

- Model	LFBHR
- Code	8731181
Speed rpm - No-load	25000
Speed rpm - at Max Power	14750
Torque Nm - at Max Power	0,1
Torque Nm - Stall Torque	0,2

### CHARACTERISTICS OF SHAPE

The normal delivery condition: cylindrical shaft and body as shown in the photo.

Optional:

Shaft

- threaded - indication /AF (left rotation excluded - subject to checks for reversible)

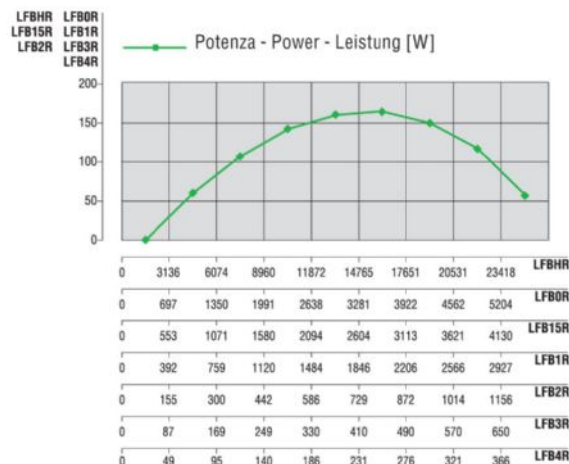
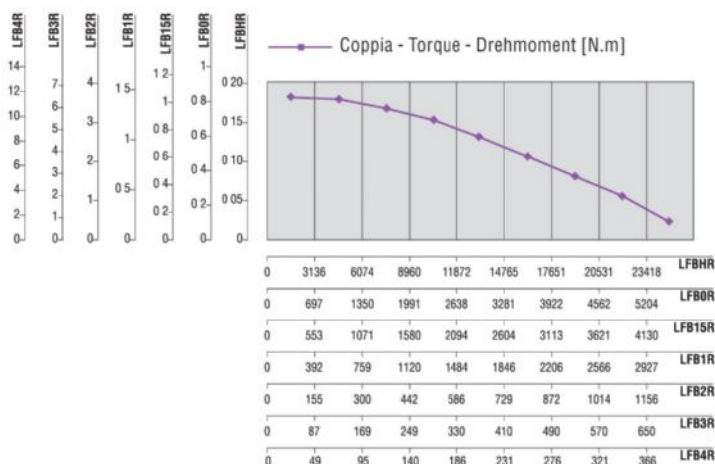
- conical - indication /AC

- with collets - indication / AP

Body

- with diamond flange coupling

### PERFORMANCE FIGURES



## MOTORS WITH POWER UP TO 850 W

LFB SERIES - Reversible

WATT: 160 / Consumption: 400 NI/1'

Data measured at pressure of 6 bar - Minimum supply hose diameter: 6 mm.

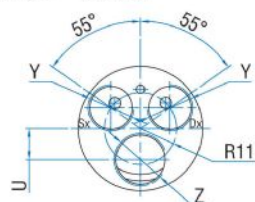
## DATA SHEET LFBHR

### RADIAL AND AXIAL LOADS

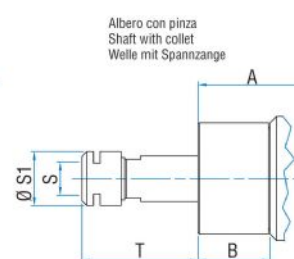
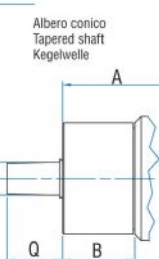
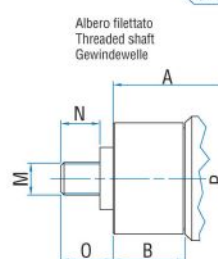
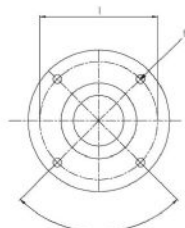
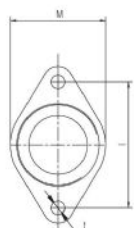
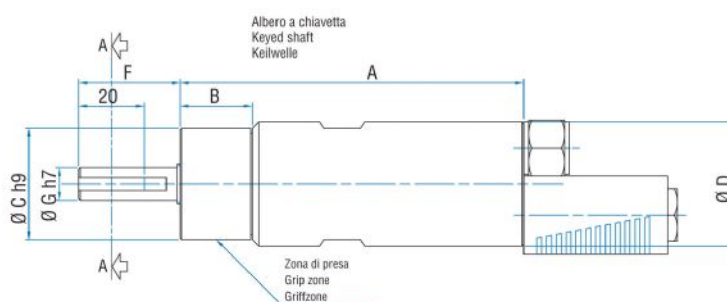
Model	Code	Fr (N)	Fa (N)	Co (N)
LFBHR	8731181	750	550	2350

### OVERALL DIMENSIONS

Serie LFB Reversibile  
Series LFB Reversible  
Serie LFB Umsteuerbar



Sez. A-A



Flange disponibili per alcuni modelli.  
Flanges available for some models.  
Flansche erhältlich für einige Modelle.

Model	Code	A	B	C	D	F	G	H	I	L	M	N	O	P	Q	S	S1
LFBHR	8731181	105	22	34	38	31	10	/	/	M4	3/8"x24UNF	12	16	B10	17	ER11	16,5