

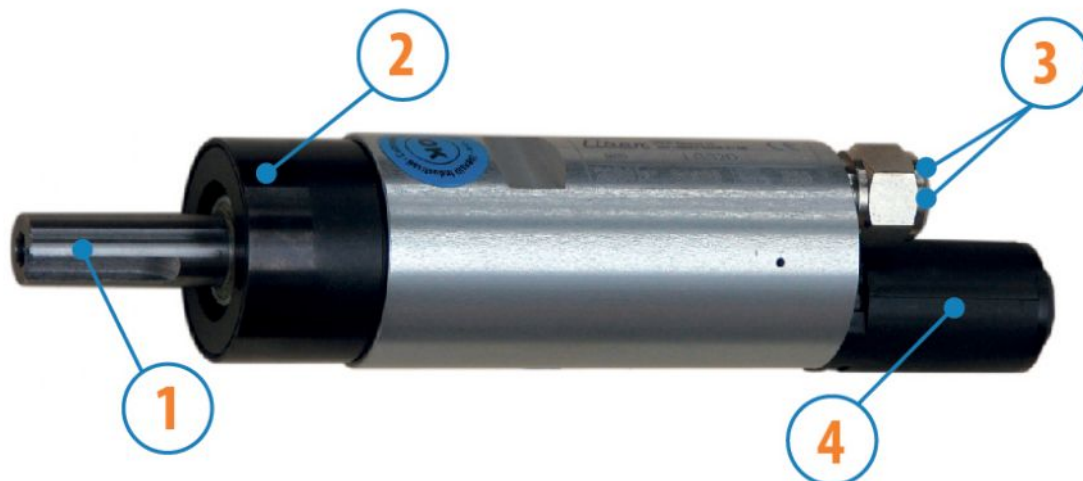
MOTORS WITH POWER UP TO 850 W

LGS SERIES - Reversible

WATT: 400 / Consumption: 560 NI/1"

Data measured at pressure of 6 bar - Minimum supply hose diameter: 8 mm

DATA SHEET LGS2R



1. Cylindrical keyed shaft
2. Grip zone
3. Air inlets
4. Air exhaust

Technical sheet

- Model	LGS2R
- Code	8731189
Speed rpm - No-load	2600
Speed rpm - at Max Power	1450
Torque Nm - at Max Power	2,7
Torque Nm - Stall Torque	3,9

CHARACTERISTICS OF SHAPE

The normal delivery condition: cylindrical shaft and body as shown in the photo.

Optional:

Shaft

- threaded - indication /AF (left rotation excluded - subject to checks for reversible)

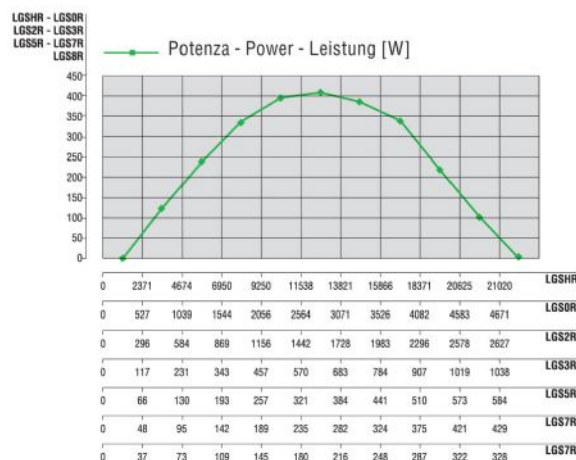
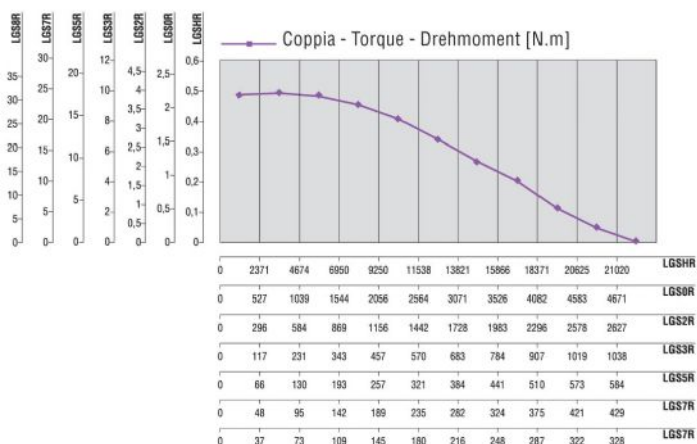
- conical - indication /AC

- with collets - indication / AP

Body

- with diamond flange coupling

PERFORMANCE FIGURES



MOTORS WITH POWER UP TO 850 W

LGS SERIES - Reversible

WATT: 400 / Consumption: 560 NI/1"

Data measured at pressure of 6 bar - Minimum supply hose diameter: 8 mm

DATA SHEET
LGS2R

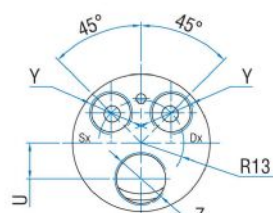
RADIAL AND AXIAL LOADS

Model	Code	Fr (N)	Fa (N)	Co (N)
LGS2R	8731189	1000	1850	3750

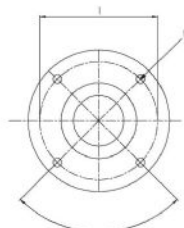
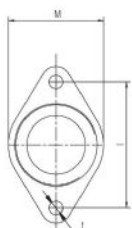
OVERALL DIMENSIONS

Serie LGS
Series LGS
Serie LGS

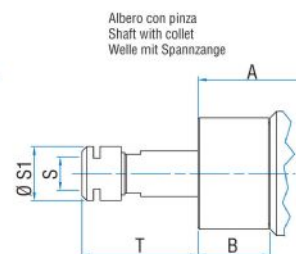
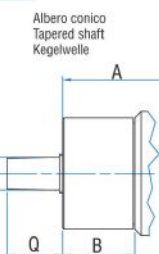
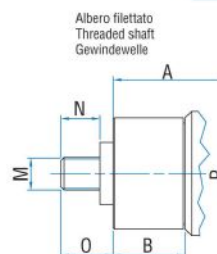
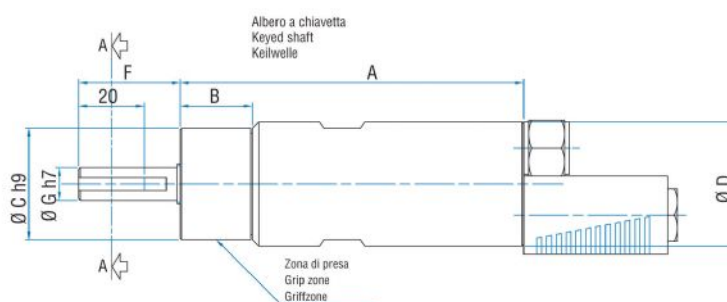
Reversibile
Reversible
Umsteuerbar



Sez. A-A



Flange disponibili per alcuni modelli.
Flanges available for some models.
Flansche erhältlich für einige Modelle.



Model	Code	A	B	C	D	F	G	H	I	L	M	N	O	P	Q	S
LGS2R	8731189	118,5	26,5	40	42	36	13	3	5	M5	1/2"x20UNF	16	20,5	B12	21	ER16