

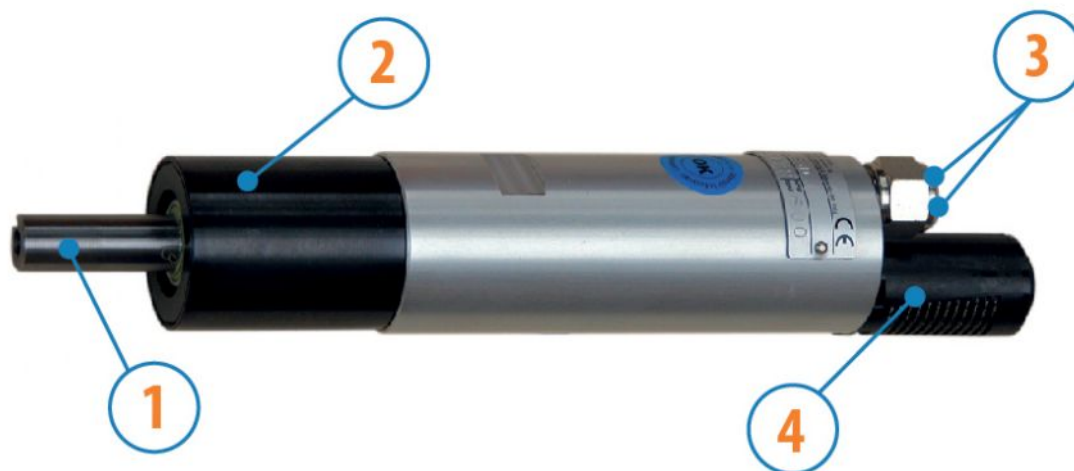
## MOTORS WITH POWER UP TO 850 W

SLGS SERIES - Reversible

WATT: 410 / Consumption: 720 NI/1'

Data measured at pressure of 6 bar - Minimum supply hose diameter: 10 mm

## DATA SHEET SLGS2R



1. Cylindrical keyed shaft
2. Grip zone
3. Air inlets
4. Air exhaust

### Technical sheet

- Model	SLGS2R
- Code	8731196
Speed rpm - No-load	1960
Speed rpm - at Max Power	990
Torque Nm - at Max Power	3,9
Torque Nm - Stall Torque	5,6

### CHARACTERISTICS OF SHAPE

The normal delivery condition: cylindrical shaft and body as shown in the photo.

Optional:

Shaft

- threaded - indication /AF (left rotation excluded - subject to checks for reversible)

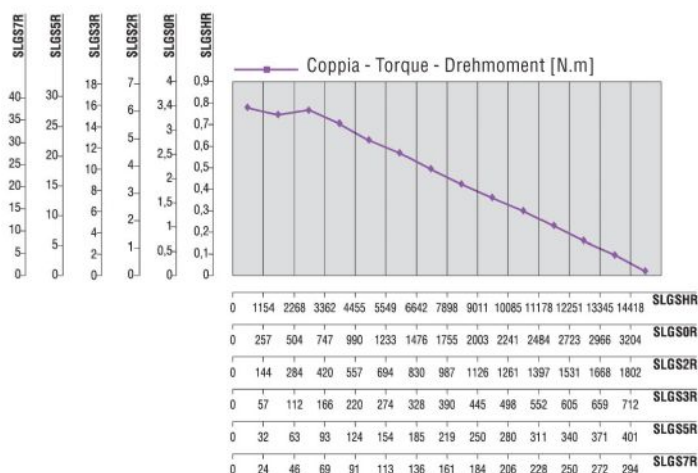
- conical - indication /AC

- with collets - indication / AP

Body

- with diamond flange coupling

### PERFORMANCE FIGURES



## MOTORS WITH POWER UP TO 850 W

SLGS SERIES - Reversible

WATT: 410 / Consumption: 720 NI/1'

Data measured at pressure of 6 bar - Minimum supply hose diameter: 10

mm

## DATA SHEET

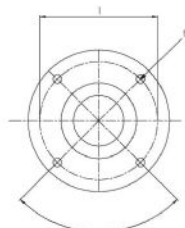
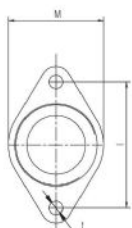
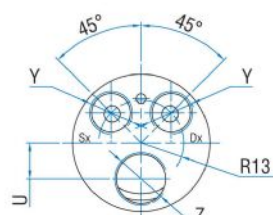
### SLGS2R

## RADIAL AND AXIAL LOADS

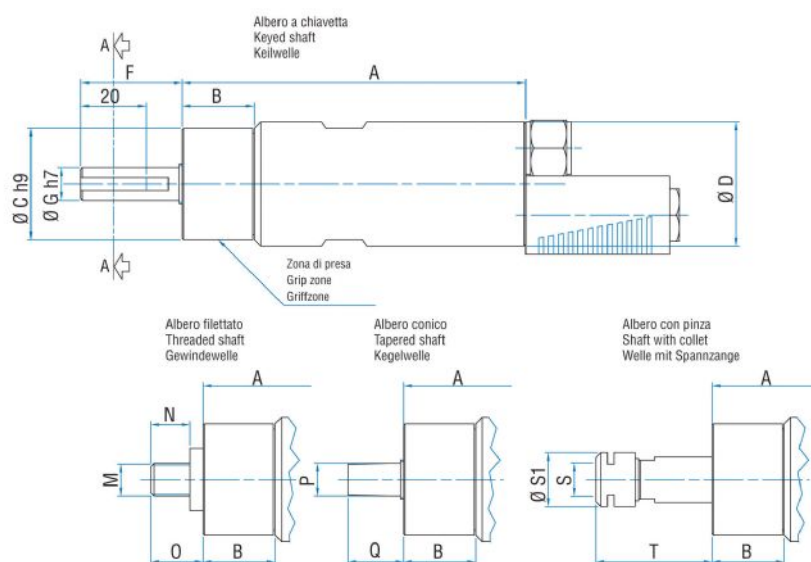
Model	Code	Fr (N)	Fa (N)	Co (N)
SLGS2R	8731196	1000	1850	3750

## OVERALL DIMENSIONS

Serie SLGS Reversibile  
Series SLGS Reversible  
Serie SLGS Umsteuerbar



Flange disponibili per alcuni modelli.  
Flanges available for some models.  
Flansche erhältlich für einige Modelle.



Model	Code	A	B	C	D	F	G	H	I	L	M	N	O	P	Q	S
SLGS2R	8731196	143,5	26,5	40	42	36	13	3	5	M5	1/2"x20UNF	16	20,5	B12	21	ER16