

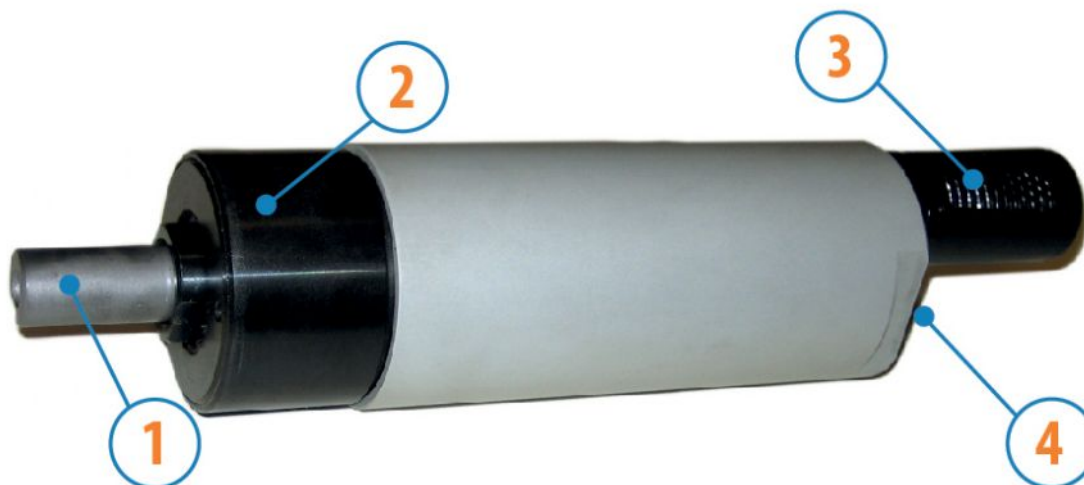
MOTORS WITH POWER UP TO 850 W

SP SERIES - Non reversible

WATT: 800 / Consumption: 1000 NI/1"

DATA SHEET

SP6D



1. Cylindrical keyed shaft
2. Grip zone
3. Air inlet
4. Air exhaust

Technical sheet

Right rotation - Model	SP6D
Right rotation - Code	8711255
Speed rpm - No-load	580
Speed rpm - at Max Power	285
Torque Nm - at Max Power	26,0
Torque Nm - Stall Torque	53,0

CHARACTERISTICS OF SHAPE

The normal delivery condition: cylindrical shaft and body as shown in the photo.

Optional:

Shaft

- threaded - indication /AF (left rotation excluded - subject to checks for reversible)

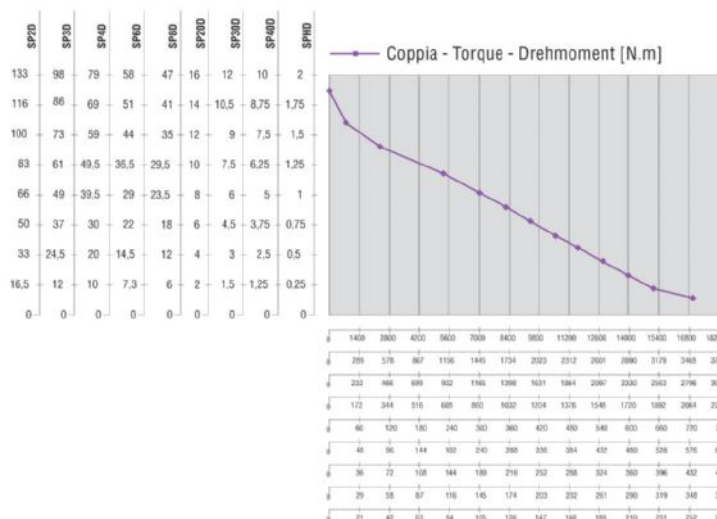
- conical - indication /AC

- with collets - indication /AP

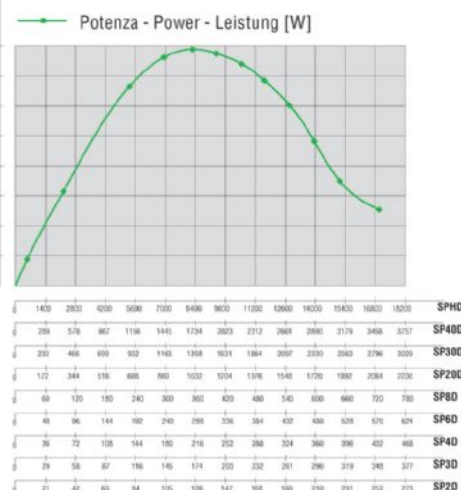
Body

- with diamond flange coupling

PERFORMANCE FIGURES



SP40D-SP30D
SP20D-SP8D-SP6D
SP4D-SP3D-SP2D



MOTORS WITH POWER UP TO 850 W

SP SERIES - Non reversible

WATT: 800 / Consumption: 1000 NI/1"

DATA SHEET

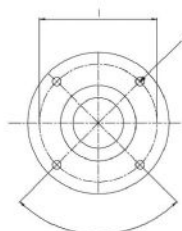
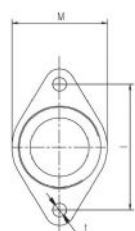
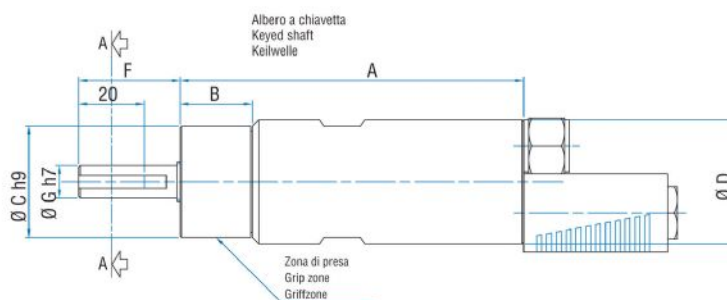
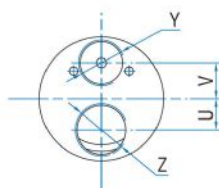
SP6D

RADIAL AND AXIAL LOADS

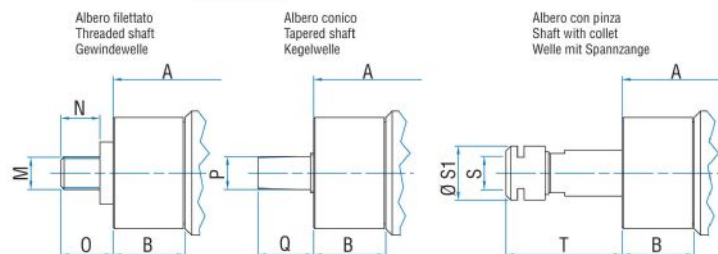
Model	Code	Fr (N)	Fa (N)	Co (N)
SP6D	8711255	2050	2350	4750

OVERALL DIMENSIONS

Serie SP Non reversibili
Series SP Non-reversible
Serie SP Nicht umsteuerbar



Flange disponibili per alcuni modelli.
Flanges available for some models.
Flansche erhältlich für einige Modelle.



Model	Code	A	B	C	D	F	G	H	I	L	M	N	O	P	Q	S	S
SP6D	8711255	174	59	48	50	31,5	14	3	5	M6	1/2"x20UNF	16	20,5	B12	26	ER16	2