

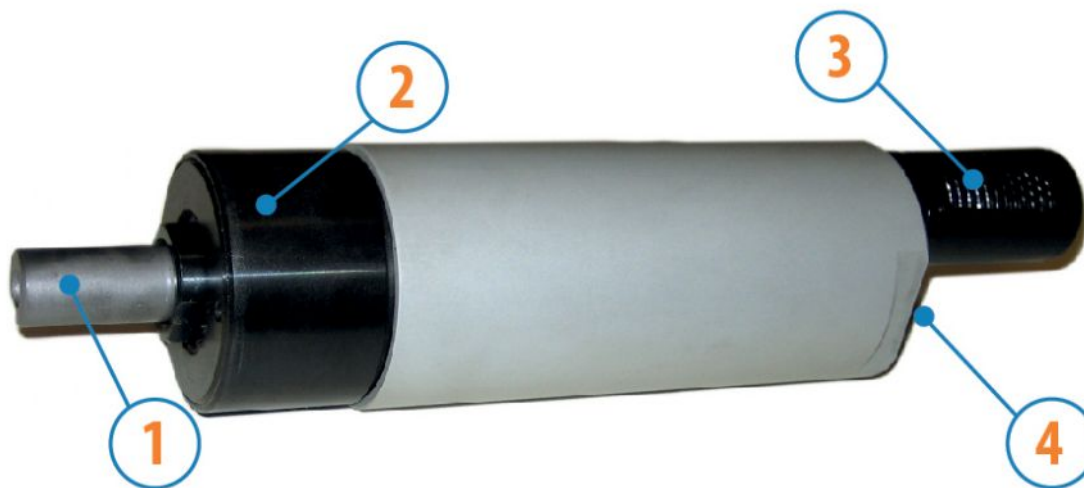
MOTORS WITH POWER UP TO 850 W

SP SERIES - Non reversible

WATT: 800 / Consumption: 1000 NI/1"

DATA SHEET

SPHD



1. Cylindrical keyed shaft
2. Grip zone
3. Air inlet
4. Air exhaust

Technical sheet

Right rotation - Model	SPHD
Right rotation - Code	8711250
Speed rpm - No-load	17000
Speed rpm - at Max Power	8270
Torque Nm - at Max Power	0,9
Torque Nm - Stall Torque	1,8

CHARACTERISTICS OF SHAPE

The normal delivery condition: cylindrical shaft and body as shown in the photo.

Optional:

Shaft

- threaded - indication /AF (left rotation excluded - subject to checks for reversible)

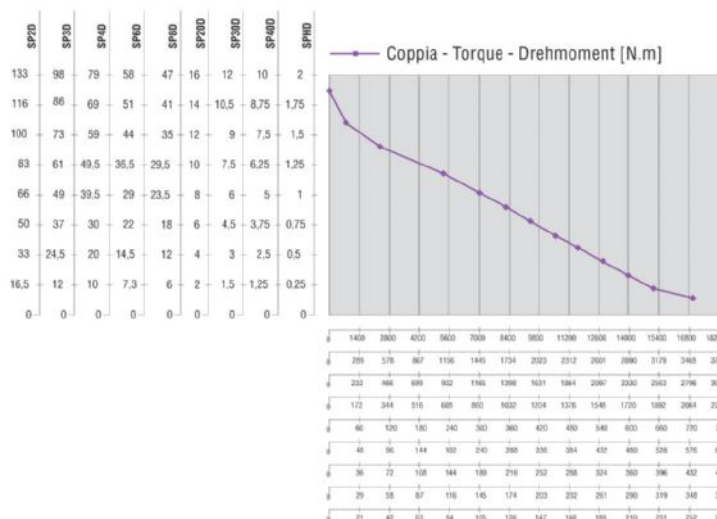
- conical - indication /AC

- with collets - indication /AP

Body

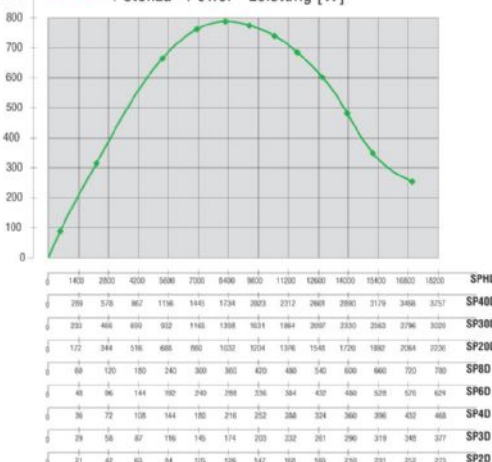
- with diamond flange coupling

PERFORMANCE FIGURES



SPHD-SP400-SP300
SP200-SP80-SP60
SP40-SP30-SP20

— Potenza - Power - Leistung [W]



MOTORS WITH POWER UP TO 850 W

SP SERIES - Non reversible

WATT: 800 / Consumption: 1000 NI/1"

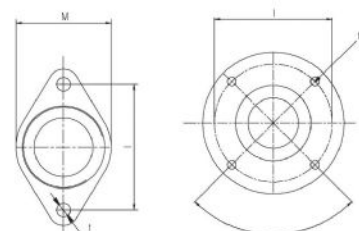
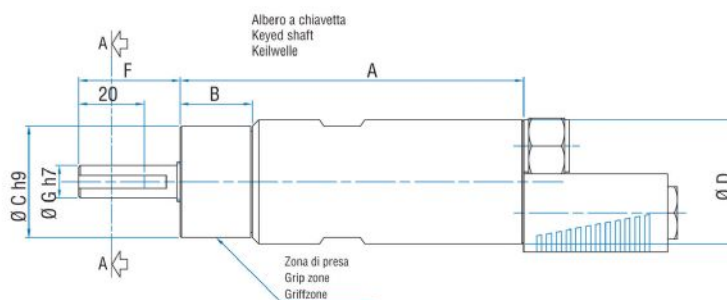
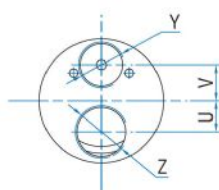
DATA SHEET
SPHD

RADIAL AND AXIAL LOADS

Model	Code	Fr (N)	Fa (N)	Co (N)
SPHD	8711250	2050	2350	4750

OVERALL DIMENSIONS

Serie SP Non reversibili
Series SP Non-reversible
Serie SP Nicht umsteuerbar



Flange disponibili per alcuni modelli.
Flanges available for some models.
Flansche erhältlich für einige Modelle.

Model	Code	A	B	C	D	F	G	H	I	L	M	N	O	P	Q	S
SPHD	8711250	146	31	48	50	31,5	14	/	/	M6	1/2"x20UNF	16	20,5	B12	26,5	ER16