

MOTORS WITH POWER UP TO 850 W

T SERIES - Non reversible

WATT: 820 / Consumption: 1300 NI/1'

DATA SHEET

T15S



1. Cylindrical keyed shaft
2. Grip zone
3. Air inlet
4. Air exhaust

Technical sheet

Left rotation - Model	T15S
Left rotation - Code	8721204
Speed rpm - No-load	1500
Speed rpm - at Max Power	770
Torque Nm - at Max Power	10
Torque Nm - Stall Torque	21

CHARACTERISTICS OF SHAPE

The normal delivery condition: cylindrical shaft and body as shown in the photo.

Optional:

Shaft

- threaded - indication /AF (left rotation excluded - subject to checks for reversible)

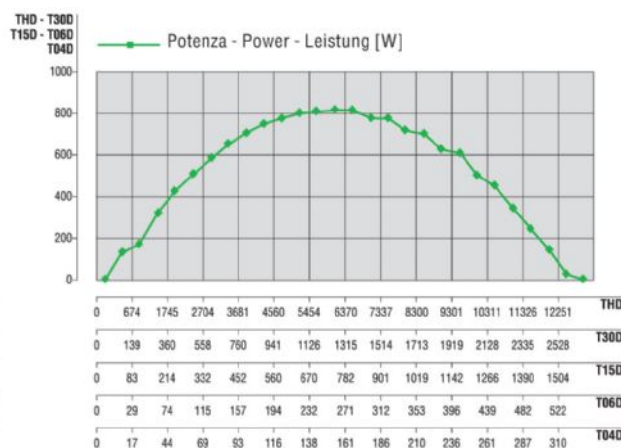
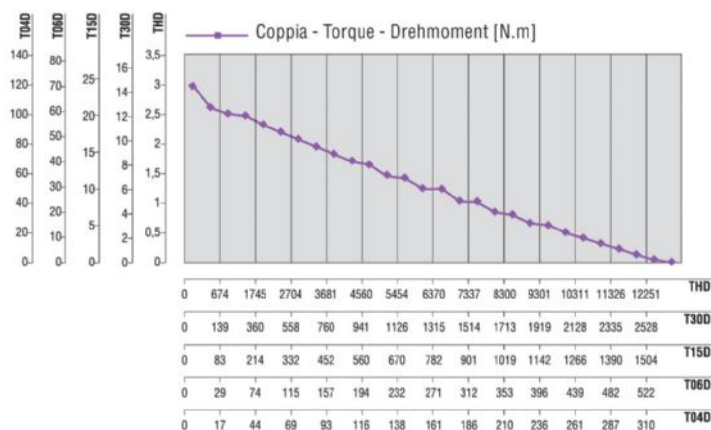
- conical - indication /AC

- with collets - indication /AP

Body

- with diamond flange coupling

PERFORMANCE FIGURES



MOTORS WITH POWER UP TO 850 W

T SERIES - Non reversible

WATT: 820 / Consumption: 1300 NI/1'

DATA SHEET

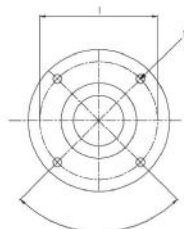
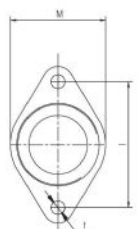
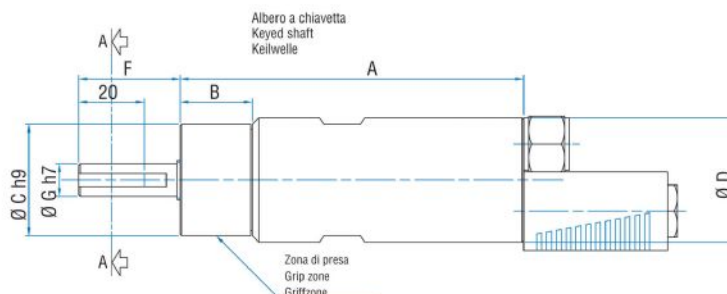
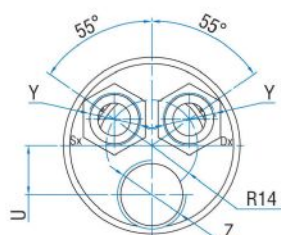
T15S

RADIAL AND AXIAL LOADS

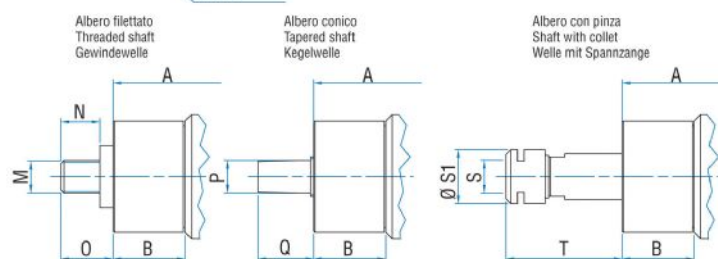
Model	Code	Fr (N)	Fa (N)	Co (N)
T15S	8721204	2050	2350	4750

OVERALL DIMENSIONS

Serie T Non reversibili
Series T Non-reversible
Serie T Nicht umsteuerbar



Flange disponibili per alcuni modelli.
Flanges available for some models.
Flansche erhältlich für einige Modelle.



Model	Code	A	B	C	D	F	G	H	I	L	M	N	O	P	Q
T15S	8721204	199,5	31,5	48	54	31,5	14	3	5	M6	1/2"x20UNF	16,5	21,5	B12	26